

Crimson Feather

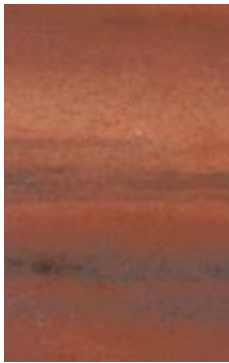
MARBLE



Brushed



Honed



Polish



Paving



Walling



Steps



Countertop



Architecture

Crimson Feather radiates gentle sophistication with its blush pink base and subtle red veining. The stone’s natural warmth and delicate texture bring a welcoming richness to interiors, creating spaces that feel refined and inviting.

- ✓ Structural strength supports lasting beauty across architectural and decorative applications
- ✓ Low water absorption preserves the surface’s smoothness and natural colour depth
- ✓ Balanced flexibility and density allow precision in finishing for brushed, honed, and polished surfaces

Physical Properties	
Apparent Density (kg/m ³)	2,700 – 2,800
Water Absorption (%)	0.1 – 2.0

Mechanical Strength	
Compressive Strength (MPa)	120 – 150
Flexural Strength (MPa)	12 – 20

Dimensions, thicknesses, and configurations of slabs can be customised in accordance with specific project or client requirements. Technical data sheets, quality certifications, and laboratory test reports can be furnished upon request or as required by the project specifications. Images are digitally created for representational purposes to convey tone and character; natural stone may vary in colour and pattern.

T: +91 82 9178 8999

E: contactus@stoneshippers.com

W: www.stonestry.com

All product descriptions, images, and specifications are provided for general information and illustrative purposes only. Natural stone is a product of nature; variations in colour, texture, and veining are inherent and should be expected. While every effort is made to ensure accuracy, the actual material may differ slightly from samples or photographs. Performance characteristics, such as durability and slip resistance, may vary depending on installation, finish, and maintenance. The company reserves the right to change product information without prior notice.