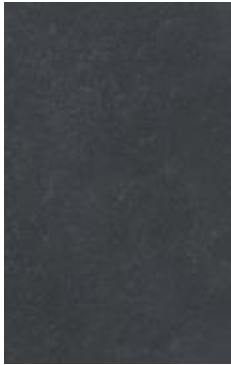
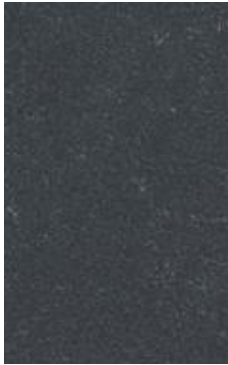


# Midnight Echo

LIMESTONE



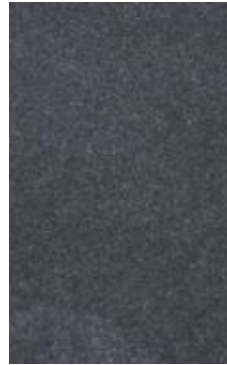
Natural



Antiqued



Sanded



Leather



Honed



Paving



Walling



Coping



Steps



Setts



Kerbs

With its charcoal tone and smooth, dense composition, Midnight Echo exudes quiet confidence and is suited to both classic and contemporary spaces. Its compact nature and refined finish provide a balance of visual depth and technical reliability, performing consistently across architectural and landscape applications.

- ✓ Compressive resilience ensures dependable strength under load and impact
- ✓ Highly impervious surface resists moisture ingress and surface degradation, maintaining a pristine appearance over time
- ✓ Strong flexural capacity delivers structural steadiness and design versatility

Physical Properties	
Apparent Density (kg/m <sup>3</sup> )	2,700
Water Absorption (%)	0.1

Mechanical Strength	
Compressive Strength (MPa)	120 – 230
Flexural Strength (MPa)	13 – 25

Dimensions, thicknesses, and configurations of slabs can be customised in accordance with specific project or client requirements. Technical data sheets, quality certifications, and laboratory test reports can be furnished upon request or as required by the project specifications. Images are digitally created for representational purposes to convey tone and character; natural stone may vary in colour and pattern.

T: +91 82 9178 8999

E: [contactus@stoneshippers.com](mailto:contactus@stoneshippers.com)

W: [www.stonestry.com](http://www.stonestry.com)

All product descriptions, images, and specifications are provided for general information and illustrative purposes only. Natural stone is a product of nature; variations in colour, texture, and veining are inherent and should be expected. While every effort is made to ensure accuracy, the actual material may differ slightly from samples or photographs. Performance characteristics, such as durability and slip resistance, may vary depending on installation, finish, and maintenance. The company reserves the right to change product information without prior notice.

© 2025 Stonestry. All rights reserved.