

Silver Path

QUARTZITIC SANDSTONE



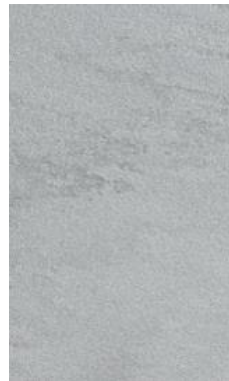
Natural



Antiqued



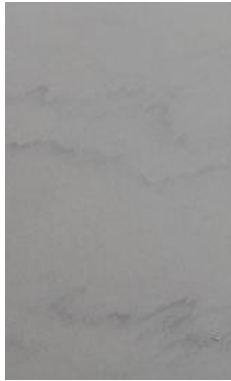
Sanded



Leather



Oceana



Satin



Honed



Desert



Paving



Walling



Coping



Steps



Setts



Kerbs



Architecture

A fine-grained quartzitic sandstone renowned for its refined texture, durability, and resilience, Silver Path's pale grey hue when dry and a deeper grey tone when wet exudes a timeless architectural charm that pairs natural simplicity with enduring performance. Its resistance to environmental stress makes it well-suited for demanding architectural and landscape applications.

- ✓ Excellent load-bearing capacity
- ✓ Superior frost and excellent weathering resistance
- ✓ High abrasion resistance suiting it for flooring and paving use

Physical Properties	
Apparent Density (kg/m ³)	2,550
Water Absorption (%)	1.2 – 1.4

Mechanical Strength	
Compressive Strength (MPa)	160 – 200
Flexural Strength (MPa)	30 – 36

Dimensions, thicknesses, and configurations of slabs can be customised in accordance with specific project or client requirements. Technical data sheets, quality certifications, and laboratory test reports can be furnished upon request or as required by the project specifications. Images are digitally created for representational purposes to convey tone and character; natural stone may vary in colour and pattern.

T: +91 82 9178 8999

E: contactus@stoneshippers.com

W: www.stonestry.com

All product descriptions, images, and specifications are provided for general information and illustrative purposes only. Natural stone is a product of nature; variations in colour, texture, and veining are inherent and should be expected. While every effort is made to ensure accuracy, the actual material may differ slightly from samples or photographs. Performance characteristics, such as durability and slip resistance, may vary depending on installation, finish, and maintenance. The company reserves the right to change product information without prior notice.

© 2025 Stonestry. All rights reserved.