

# STONESTRY

**ELEMENTAL**  
COLLECTION







# every *stone* has a *story*

To us, stone is more than a material; it's a *storyteller*. It speaks of resilience and the raw beauty of nature. Every curve, texture, and thoughtful detail in our work is a tribute to the artistry.

By blending state-of-the-art CNC technology with the finesse of skilled craftsmanship, we transform raw stone into refined, sculptural pieces. From garden furniture to striking architectural features, each creation is thoughtfully crafted to strike a balance between form, function, and comfort.

We believe *every stone has a story*. Let's craft yours, together.







**40+** years of  
experience

## From Nature to Masterpieces

### *The Story of Our Legacy*

We craft nature into enduring works of art. With decades of recognised excellence, we have established ourselves as a globally trusted name in premium-quality stone.

Driven by a team of professionals, multiple state-of-the-art factories, and in-house quarries, our strength lies in scale, precision, and innovation. We offer an unparalleled selection of the finest quartzitic sandstone, sandstone, limestone, basalt, marble, schist, slate, and granite, handpicked to bring beauty and longevity to every design.

Rooted in traditional values and guided by modern craftsmanship, we work closely with architects, builders, designers, and distributors in India and worldwide to deliver elegant, durable, and sustainable products. Every piece we create reflects a deep commitment to quality, innovation, and trust.



# Stone Chronicles

Fascinating facts of bespoke furniture in Indian natural stone

## CNC meets craft

CNC (Computer Numerical Control) machining brings millimetre precision to the age-old craft of stone carving – merging technology with tradition

## Made to measure

Bespoke stone furniture can be custom-designed down to the smallest curve or groove – CNC allows even the most intricate detailing to come alive in hard stone

## From quarry to conversation piece

Each furniture piece begins with a single block of stone – sourced, cut, sculpted, and polished into tables, benches, consoles, or vanities

## No two alike

Thanks to natural veining and colour shifts, every stone furniture piece is unique, even with the same design

## Indian sandstone's secret

Indian sandstone, often used in CNC furniture, is ideal for fine detailing and tough enough for daily use

## Luxury meets sustainability

Stone, sourced responsibly, is a natural and recyclable material that offers a sustainable luxury option for exteriors and interiors

DID YOU  
KNOW ?

*From* **Dream** *to* **Design**

## Innovating with Stone. Crafting with Passion.

The magic of CNC technology in the world of natural stone furniture is not about what stone can become – it is about what you can dream, and how we can bring it to life.





## From **Slab** to **Sculpture**

### Where Nature Meets Precision

Our commitment to innovation is reflected in our investment in high-tech machinery and the expertise of our team. Staying at the forefront requires continuous evolution, embracing new technology and refining techniques to deliver excellence in every creation.



## What is Stone Furniture?

### Where Strength Meets Sophistication

It celebrates nature, crafted not from wood or metal but from marble, granite, and quartzitic sandstone. Each piece blends elegance with durability and everyday functionality, designed to last for generations.

### Naturally Unique, Authentically Yours

No two pieces are alike. Every slab bears nature's signature, shaped over millennia. It merges organic textures with refined craftsmanship.

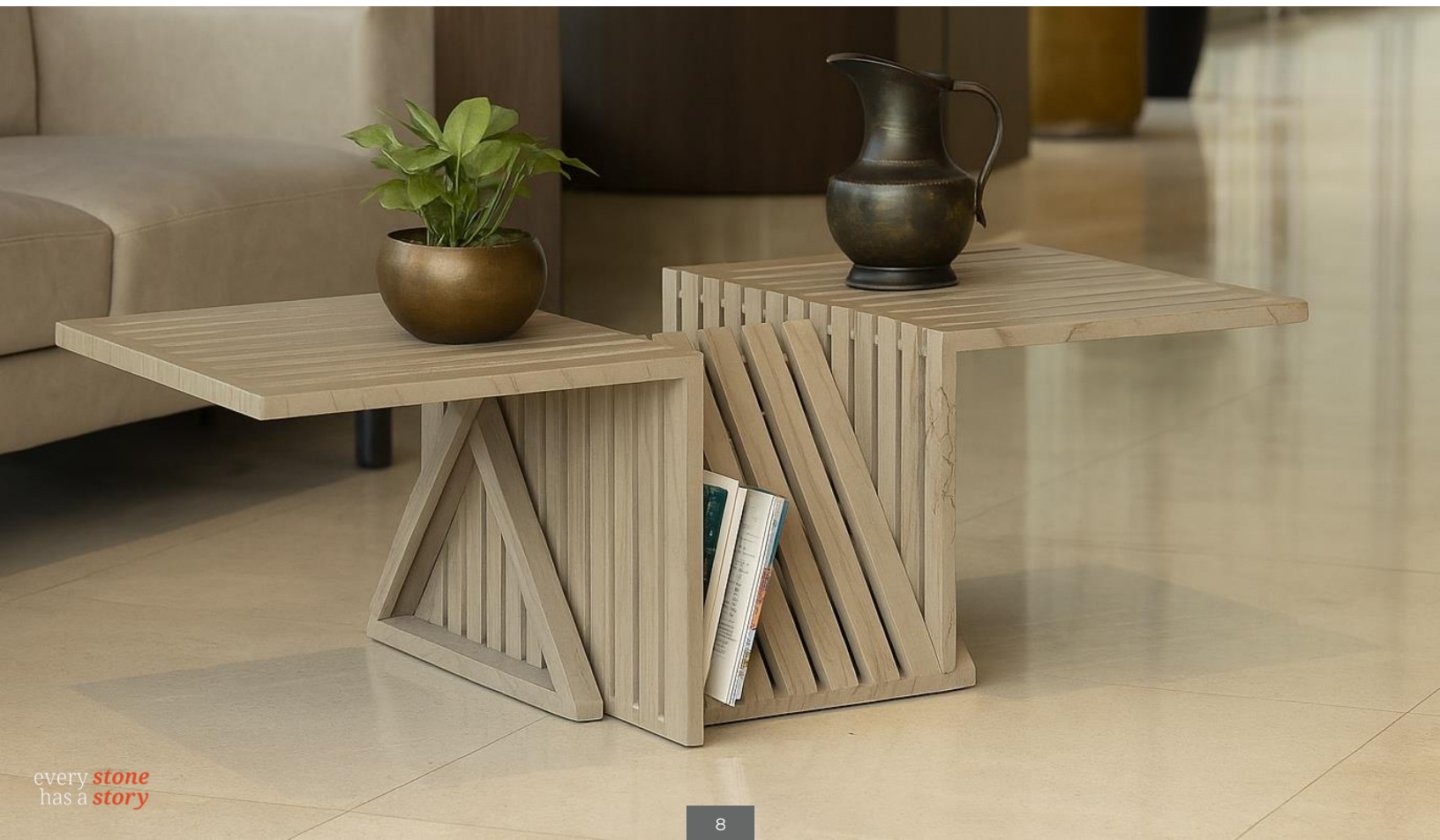
### Crafted to Endure

Stone resists wear, outlasts trends, and needs little care. Whether indoors or out, it adds quiet confidence to modern, rustic, or minimalist spaces.

### An Elemental Experience

Cool to the touch, yet warm in presence, stone evokes a sense of permanence and peace. It anchors your space in natural beauty and quiet confidence..

Stone furniture isn't just décor; it embodies character, craftsmanship, and a connection to the earth.





## What Sets Us Apart?

### Quality and Craftsmanship

Our products are thoughtfully designed and meticulously hand-finished. We uphold the highest standards while using premium natural stone.

### Aesthetic Brilliance

Our furniture is artistic in spirit yet grounded in purpose, ensuring practicality and everyday functionality.

### Customisation and Personalisation

We are passionate about creating the extraordinary. We explore your vision and curate bespoke pieces that capture the essence of your living space. We specialise in custom furniture designed to inspire and built to endure.

### Sustainability

Natural stone is one of the most sustainable materials, offering unmatched longevity. Unlike wood or metal, it resists decay and environmental wear, making it a maintenance-free, eco-conscious alternative. We responsibly source materials that honour nature and blend with their surroundings.







## Natural Stone. Personal Touch.

Welcome to a world where nature's timeless beauty meets art. Our catalogue showcases meticulously designed and crafted furniture and garden pieces, crafted from exquisite Indian quartzitic sandstone and much more.

For four decades, we have been at the forefront of stone manufacturing, blending traditional expertise with state-of-the-art machinery and advanced technology. The result is a collection that exemplifies precision, quality, and the craftsmanship that defines our legacy.

Every piece in this collection is one-of-a-kind, tailored to resonate with your vision. These creations are designed to transform spaces into expressions of individuality and sophistication.

We invite you to explore our curated selection and discover how nature and innovation combine to create masterpieces that stand the test of time.



Sculptural Forms

where design flows and stories unfold

Repose	16
restful comfort and elegance	
Cosmos	18
planetary stone forms with an artistic vibe	

Signature Seating

sculpted comfort. timeless presence.

Serenity	22
peaceful comfort with a quiet aura	
Nest	24
warmth and comfort in its carved organic form	
Flow	26
gentle and graceful with a quiet twist	
Harmony	28
blend of natural form and modern design	
Fusion	30
merging traditional with the contemporary	
Infinity	32
endless loop that befits a continuous girdle	
Zen	34
fusion of architecture and Japanese minimalism	
Unity	36
solid and grounded with understated confidence	
Equilibrium	38
balance and stability mirror its orderly geometric shape	
Zenith	40
peak or high point echoes its bold angular style	
Eclipse	42
captures the void and celestial inspiration in its look	
Heritage	44
emphasises its classic, enduring design roots	
Halo	46
an inclusive, circular form with a gentle feel	
Ripple	48
gentle wave-like contours for a soothing effect	
Cadence	50
allude to musical rhythm, with guitar-inspired shape and balance	
Solace	52
comfort, tranquillity, and quiet reflection	
Sanctuary	54
a safe, relaxing haven intertwined with greenery	



**Stone-Crafted Surfaces**  
*grounded in elegance. made to gather.*

<b>Hearth</b> <i>warm central focus that draws people together</i>	58
<b>Cove</b> <i>soft, natural flow folded in design</i>	60
<b>Facet</b> <i>gem-like shape that complements its refined surface</i>	62
<b>Stillness</b> <i>calm, grounded, and minimalist</i>	64

**Timeless Touches**  
*small pieces. big presence.*

<b>Oasis</b> <i>small haven of greenery</i>	68
<b>Beacon</b> <i>guidance that is simple yet evocative</i>	70

**Living Installations**  
*artful expressions in stone*

<b>Mirage</b> <i>illusion of shifting light and pattern</i>	74
<b>Rhythm</b> <i>fashioned raised texture with artistic depth</i>	76
<b>Tide</b> <i>mild wave that befits its flowing pattern</i>	78









# Sculptural Forms

*where design flows and stories unfold*

# Repose

*restful comfort and elegance*

Designed for relaxation, the Repose lounger is simple in form and quiet in presence. Carved from a single block of quartzitic sandstone, it offers a comfortable reclining shape with a unique blend of luxury, style and functionality.





## Monolithic Craftsmanship

Precision-carved from one  
solid block

## Artisan Finish

Smooth finish highlights  
texture and veining

## Ergonomic Design

Curved form for superior  
lounging comfort



L1650 / B 600 / H 580 / T 40 (mm)

W 124 (kg)



# Cosmos

*planetary stone forms with an artistic vibe*

These smooth, carved stone spheres bring a sculptural touch to any setting. Whether used as decorative pieces, subtle dividers, or landscape accents, they add a grounded and natural feel.





## Precision Finishes

Sawn and honed to give a smooth, matte surface with a refined texture that also enhances visual clarity

## Unique Veins and Colours

Features organic vein patterns and banding that resemble planetary forms, making each piece exclusive

## Decorative Versatility

Minimalist yet grounded design suited for zen gardens, public spaces, and private art displays



D 300 / 400 / 500 / 600 (mm)

W 37 / 89 / 173 / 300 (kg)





## Signature Seating

*sculpted comfort. timeless presence.*

# Serenity

*peaceful comfort with a quiet aura*

Sculptural and serene, Serenity is shaped like a river-polished pebble. They are ideal for outdoor spaces, adding an organic touch that blends seamlessly with landscaped areas and modern settings.





## Built For Every Season

Resists sun, rain, and frost, making it ideal for year-round outdoor use

## Versatile Placement

Ideal for gardens, patios, lobbies, and zen spaces

## Functional Art

Acts as a design piece and a practical seat



L 800 / B 600 / H 450 (mm)

W 375 (kg)

# Nest

*warmth and comfort in a carved  
organic form*

A pebble-like silhouette blurs the line between furniture and art, creating a gallery-worthy signature piece. It reflects refined taste and distinctive style, instantly elevating your décor with its rarity. Its minimalist form fits seamlessly into any setting.





## Nature Inspired Serenity

Reminiscent of a river stone that brings nature's calm into your space, evoking outdoor tranquillity indoors

## Comfortable Curves

Gently carved contours cradle the body and deliver comfort with an artful design embracing cosiness

## Tranquil Retreat

More than seating, it adds a zen-like calm, offering a serene spot for relaxation in everyday life



L1975 / B 771 / H 771 (mm)

W1458 (kg)



# Flow

*gentle and graceful with a quiet twist*

Flow adds a soft sense of movement to its form. Its lightly turning shape offers a fresh take on seating, offering comfort and visual interest without overpowering its surroundings.





## Sculptural Aesthetic

Each seat features a smooth, subtly twisted cube form that showcases a minimalist, geometric appeal

## Comfortable Design

Gently contoured sides and flattened seating surface ensure ergonomic comfort without compromising on strength

## Configurable Seating

Available in complementary earth tones, these seats can be arranged in circular layouts or linear alignments



L 540 / B 450 / H 450 (mm)

W 271 (kg)



# Harmony

*blend of natural form and modern design*

Innate shapes and the textures of natural stone inspire Harmony. It is designed to feel rooted in its environment and complements spaces that value simplicity, evoking a sense of calm and balance.





## Contrasting Textures

A polished seat balanced by textured legs – an interplay of refined and rustic finishes

## Sitting Comfort

Thoughtful curves and proportions ensure relaxed seating and aesthetics

## Sustainable Elegance

Responsibly sourced materials with an eco-conscious design



L 1500 / B 300 / H 450 (mm)  
SEAT: L 75 (mm)  
LEGS: L 150 (mm)

W 217 (kg)

# Fusion

*merging traditional with the contemporary*

Blending conventional stonecraft with a modern approach, Fusion strikes a balance between the familiar and the fashionable. It is a thoughtful piece that fits comfortably into a variety of architectural or landscape styles.





## Dual-Finish Design

---

Smooth, refined seating surface contrasts beautifully with the raw, natural stone texture on one leg

## Minimalistic Profile

---

Clean lines and an understated shape fit seamlessly into modern landscapes

## Sculptural Durability

---

Made from a single block of natural stone that also serves as a focal point for any architectural space



L 1550 / B 400 / H 450 / T 65 (mm)

W 464 (kg)



# Infinity

*endless loop that befits a continuous girdle*

With its incessant hoop design, Infinity adds a modern element to its surroundings. The geometric shape creates clean lines while offering practical seating for parks, entryways, and galleries.





## Modern U-Shaped Legs

Bold U-shaped legs offer a sleek geometric aesthetic along with structural integrity

## Contrasting Materials

Light-coloured seat with dark legs creates a striking contrast that adds to its visual appeal

## Floating Seat Effect

The seat slab appears to float above the inner part of the legs, giving the bench a modern, airy look



L1500/B400/H450 (mm)  
SEAT: T50 (mm)  
LEGS: T150 (mm)

W169 (kg)



# Zen

*fusion of architecture and Japanese  
minimalism*

Zen is an homage to the quiet strength and symmetry found in traditional Japanese garden style. It is a statement of permanence, calm, and poetic restraint.





## Form and Function

Bold, semi-circular stone supports are visual statements and robust structural elements, making them architectural and artistic

## Floating Slab Design

Top slab floats delicately above the base supports thanks to its recessed anchoring, reflecting mastery of spatial tension

## Wabi-Sabi Inspiration

Celebrating natural materials and organic asymmetry that evoke beauty in impermanence



L 1200 / B 500/400 / H 450 (mm)  
SEAT: T 50 (mm)  
LEGS: T 150 (mm)

W 152 (kg)



# Unity

*solid and grounded with understated confidence*

Carved from a single block, Unity's simple lines highlight the natural beauty of the stone, making it ideal for open courtyards, public spaces, or areas that call for quiet durability.





## Geometric Silhouette

---

Crisp edges and rectilinear form for a modern aesthetic that contrasts beautifully with organic textures

## One-Block Stonework

---

Made from a single block, the bench exhibits strength and unity, ideal for structural integrity and longevity

## Honed Surface

---

A surface that is smooth to the touch but retains enough texture to provide grip in outdoor settings



L 1700 / B 400 / H 450 (mm)

W 185 (kg)

# Equilibrium

*balance and stability mirror its  
orderly geometric shape*

Defined by right angles and clear lines, Equilibrium has a quiet, structured presence. It works well in more formal or minimalist spaces, where geometry can provide balance and order.





## Architectural Minimalism

---

A clean, linear form with solid block legs and a cantilevered seat showcases modern minimalism

## Precision Joinery

---

Seat united with a monolithic base using recessed joint showcasing CNC craft without fasteners

## Cantilevered Illusion

---

One side is dramatically cantilevered, giving the piece a gravity-defying aesthetic



L 1550 / B 350 / H 400 (mm)  
SEAT: T 50 (mm)  
LEGS: L 550 / 350 (mm)

W 466 (kg)



# Zenith

*peak or high point echoes its bold  
angular profile*

With its simple, sharp form,  
Zenith offers a clean and distinct  
look. It adds variation and rhythm  
to both open landscapes and  
more structured environments.





## Trapezoidal Aesthetic

---

Sharply angled trapezoidal legs evoke bold architectural geometry, giving a modern silhouette

## Structural Integrity

---

The bench's solid triangular bases provide a grounded, stable presence that anchors the sleek, linear seat

## Design Language

---

No coatings, screws, or moving parts with clean planes and unadorned surfaces



L 1700 / B 350 / H 400 (mm)  
SEAT: T 50 (mm)  
LEGS: L 550 / 350 (mm)

W 302 (kg)



# Eclipse

*captures the void and celestial  
inspiration in its look*

Designed for places of pause  
along trails or gardens, Eclipse is  
compact, sturdy, and modest in  
design. It fits easily into outdoor  
environments, offering rest  
without demanding attention.





## Unified Armrest and Backrest

Backrest and armrests are integrated for an ergonomic design that supports posture and comfort

## Bold Structural Side Panels

Thick, curved panels and slightly flared at the base for stability with circular insets and cutouts on the sides

## Futuristic Form

A dynamic, flowing silhouette reminiscent of sci-fi aesthetics with arched sides and curved contours



L 1525 / B 500 / H 450 (mm)  
SEAT: T 80 (mm)  
BACK REST: T 100 (mm)  
LEGS: T 100 (mm)

W 375 (kg)



# Heritage

*emphasises its classic, enduring  
design roots*

Timeless in shape and familiar in feel, Heritage reflects traditional stone craftsmanship. It brings a sense of permanence and comfort to plazas, gardens, and community areas.





## Classic Slat-Back Design

A gently arched backrest with parallel stone slats, the bench combines traditional comfort with a material twist

## Low Maintenance

Unlike wood or plastic, this bench requires minimal upkeep and does not degrade or leach chemicals

## Gardens and Public Spaces

Ideal for landscaped gardens, parks, and public spaces, balancing functionality and elegance



L 1650 / B 450 / H 450 (mm)

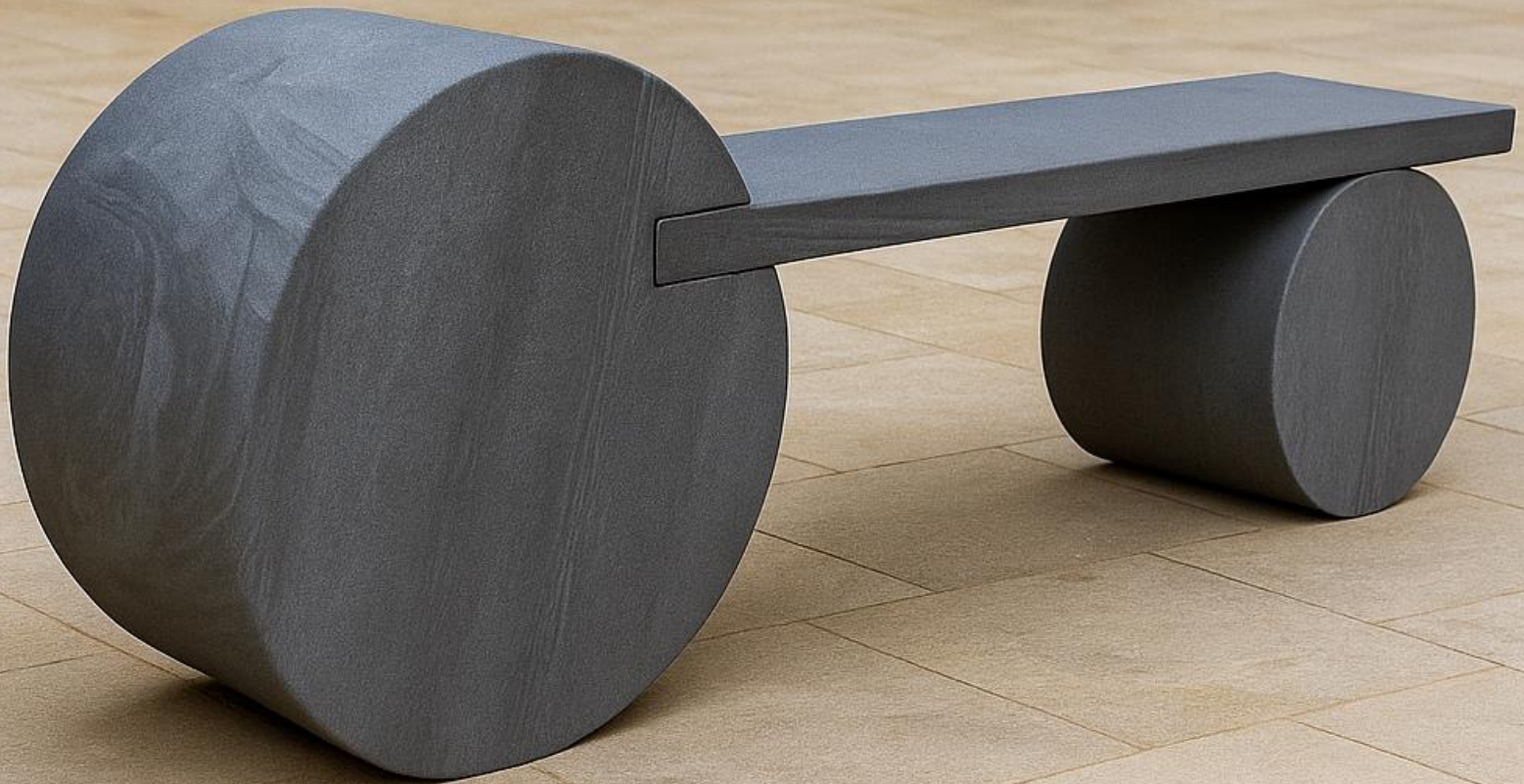
W 240 (kg)



# Halo

*an inclusive, circular form with a gentle feel*

Shaped as a gentle arc or full circle, Halo supports shared seating and open conversation. It's well-suited for community spaces, around trees, or in garden courtyards where people come together.





## Iconic Circular Base Design

A bold, cylindrical stone – an architectural feature that highlights modern geometry with solidity

## Balancing Art and Function

Its sculptural silhouette and utilitarian purpose serve functional seating with a contemporary landscape

## Low Upkeep Luxury

Made from natural stone requires minimal care while maintaining its aesthetic and durability



L 1700 / B 350 / H 400 (mm)  
SEAT: T 50 (mm)  
LEGS: L 550 / 350 (mm)

W 361 (kg)



# Ripple

*gentle wave-like contours for a soothing effect*

Ripple mirrors the waves of moving water. Its rhythmic form provides a relaxed seating experience while anchoring spaces with a sculptural stillness, blending artful form with everyday function.





## Contour Elegance

Its flowing wave-like profile makes an understated statement with curves giving it a classic aesthetic

## Diverse Settings

Adapts to any environment, be it a private garden, a contemporary interior, or a public plaza

## Urban Styling

Functions as an inviting piece of urban furniture that welcomes a respite



L 2000 / B 450 / H 598 (mm)

W 884 (kg)



# Cadence

*allude to musical rhythm, with guitar-inspired shape and balance*

Cadence blends form and function with smooth lines and balanced curves. Its shape accommodates different sitting postures while becoming a distinct visual anchor outdoors.





## Guitar-Inspired Form Language

Fluid interpretation of a guitar's flowing silhouette, referencing musical rhythm

## Visual Lightness

Sculptural undercut looks like the body of a guitar and reduces weight to the eye, creating a floating effect

## Dual-Sided Interaction

Symmetrical form allows you to engage with it from either side, where movement flows around it



L1700 / B500 / H400 / T45 (mm)

W259 (kg)



# Solace

*comfort, tranquillity, and quiet reflection*

Simple in profile, Solace fits comfortably into green surroundings. Its low, open form encourages restful seating, blending seamlessly into both structured and wild landscapes.





## Distinct Curved Underside

Unique concave bottom gives the bench an architectural lightness, making it visually float

## Simple Character

Rectangular silhouette with dynamic curvature gives it a bold yet minimalist presence

## Integrated Form with Zero Joints

No seams or assembly increases durability and minimises weak points in structure



L1885 / B 485 / H 420 / T 55 (mm)

W 545 (kg)



# Sanctuary

*a safe, relaxing haven intertwined with greenery*

Sanctuary is an innovative and functional bench featuring a planter, showcasing the beauty of stone and greenery. It offers a cosy seating area and a place for plants, creating a mini oasis in indoor and outdoor settings.





## Nature's Corner

Invites you to sit relaxed and enjoy the fresh greenery, bringing nature's tranquillity to your living space

## All-in-One Design

A two-in-one planter bench that merges form and function without any clutter

## Prominent Focal Point

Lush plants and sculpted stone make this planter an eye-catching centrepiece that enhances any setting



L 1500 / B 435 / H 450 (mm)  
SEAT: T 35 (mm)  
PLANTER: T 20 (mm)

W 725 (kg)







## Stone-Crafted Surfaces

*grounded in elegance. made to gather.*



# Hearth

*warm central focus that draws people together*

Soft, rounded edges and a natural stone surface of the Hearth coffee table bring warmth and texture to its living spaces. Its shape encourages easy placement and informal gathering.





## Dual Surface Utility

Top and open-bottom shelf offers storage and display space, merging style with practicality

## Contemporary Form

Rounded rectangle profile creates a modern yet soft visual that befits minimalist and luxe interiors

## Timeless Aesthetic

Rich veining and a warm, striated pattern brings out the stone's natural grain in an inherently unique way



L1400/B500/H400/T20 (mm)

W110 (kg)



## Cove

*soft, natural flow folded in design*

Cove's "waterfall" design creates a gorgeous, seamless stream from the tabletop down to the floor. It produces a striking, uninterrupted form that blends art with functionality.





## Continuous Form

It's folded, rotated U-shape makes it a centrepiece with gallery-like elegance

## Soft, Safe Curves

Smooth, rounded edges and corners create a pleasant look and a serene, welcoming atmosphere

## Exquisite Craft

Meticulous blend of modern engineering techniques for perfection



L1200 / B 840 / H 400 / T 25 (mm)

W 171 (kg)



## Facet

*gem-like shape that complements its refined surface*

A simple yet confident profile, Facet offers a contemporary triangular form that pairs well with both clean and organic lines. It works nicely as a centrepiece or side table.





## 360° Silhouette

Designed to be admired from any angle, the flowing loop reveals its striking profile from any viewpoint

## Airy Open Design

Its signature hollow centre and continuous curves give the space an airy feel without overwhelming it

## Artful Geometry

It transcends mere furniture to become a functional work of art, standing out as a conversation piece



L1061 / B1061 / H421 / T25 (mm)

W90 (kg)



# Stillness

*calm, grounded and minimalist*

Quiet and grounded, Stillness holds a static, strong linear presence. Its uncluttered form invites pause, made for long-lasting use in gardens, cafés, and open spaces.





## Bold Architecture

A sculptural mix of geometric planes and curves adds a statement to indoor and outdoor settings

## Dynamic Yet Grounded

The curved underbody creates a feeling of lift and lightness, giving the coffee table a quiet active presence

## Symmetry Meets Simplicity

Sharp definition and clean symmetry, with a flat top surface, provide functional comfort without chaos



L1850 / B 400 / H 390 / T 40 (mm)

W 205 (kg)







# Timeless Touches

*small pieces. big presence.*



# Oasis

*small haven of greenery*

A tall, cylindrical stone planter with a smooth, textured surface and a modern aesthetic, Oasis is a statement piece perfect for snake plants, palms, and ferns. It is an ideal fit for contemporary interiors and patios.





## Striking Design

---

Cylindrical shape draws the eye upward, adding visual to your décor with a sleek, modern silhouette

## Ample Room

---

Tall, deep profile provides soil depth for plant roots to grow freely, giving lush foliage and stronger blooms

## Indoor and Outdoor

---

Freedom to style your greenery indoors and yet tough enough for the backyard or balcony



L 600 / B 600 / H 1400 / T 25 (mm)

W 165 (kg)



# Beacon

*guidance that is simple yet evocative*

A radial stone compass medallion inlaid with gleaming brass lettering, Beacon is a visual anchor that quietly commands attention. Its design grounds the space with a sense of orientation and calm, radiating understated grandeur through its marriage of natural stone and metal craftsmanship.





## Orientation and Symbolism

An eight-point compass rose that offers décor with direction and journey

## Elegant Contrast

Interplay of natural stone with brass catches the light with a subtle gleam that highlights the design

## True North Alignment

Aligned with the cardinal north, the compass serves as a subtle wayfinding within architecture



L 430 / B 280 / T 25 (mm)

W 8.6 (kg)







# Living Installations

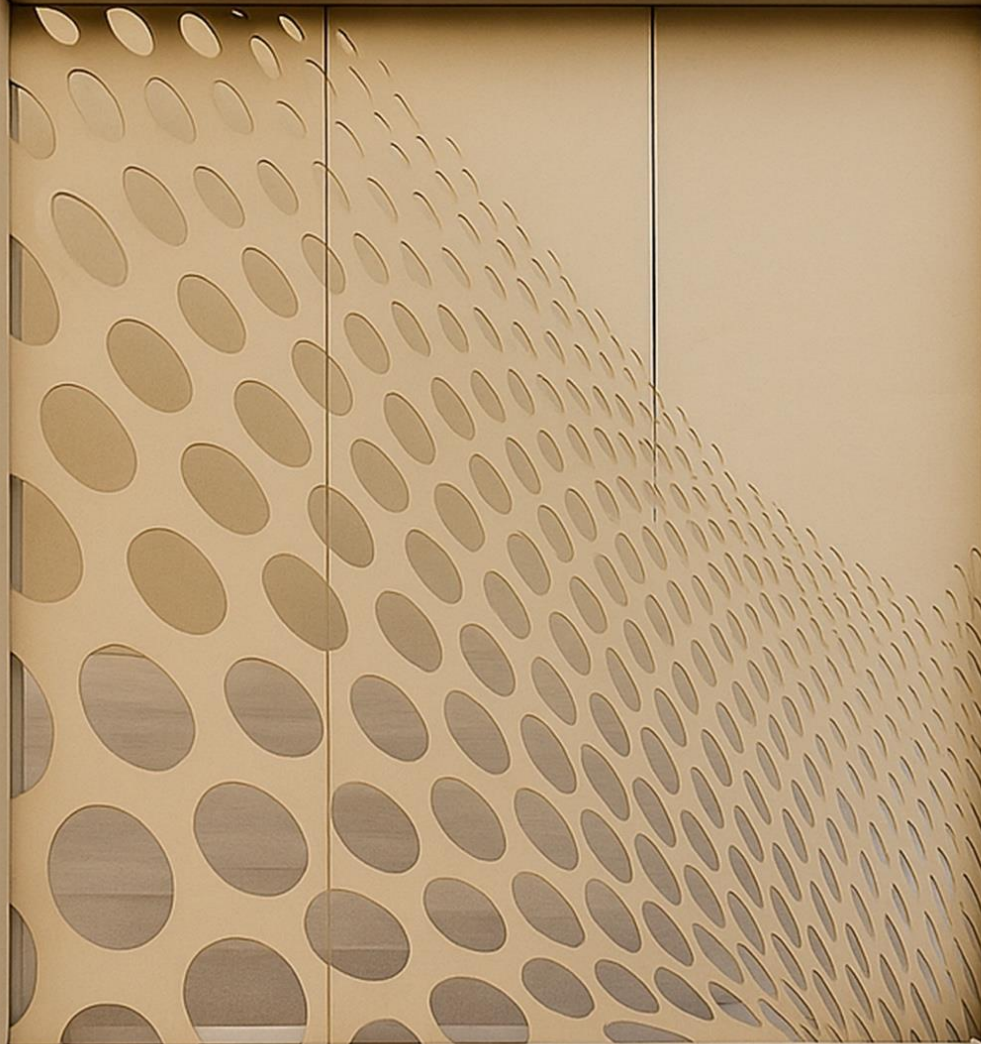
*artful expressions in stone*



# Mirage

*illusion of shifting light and pattern*

Blending art and architecture into a single element, Mirage's intricate 3D pattern and sculptural form create a play of light and shadow across surfaces, bringing your space to life.





## Dynamic Light and Shadow Play

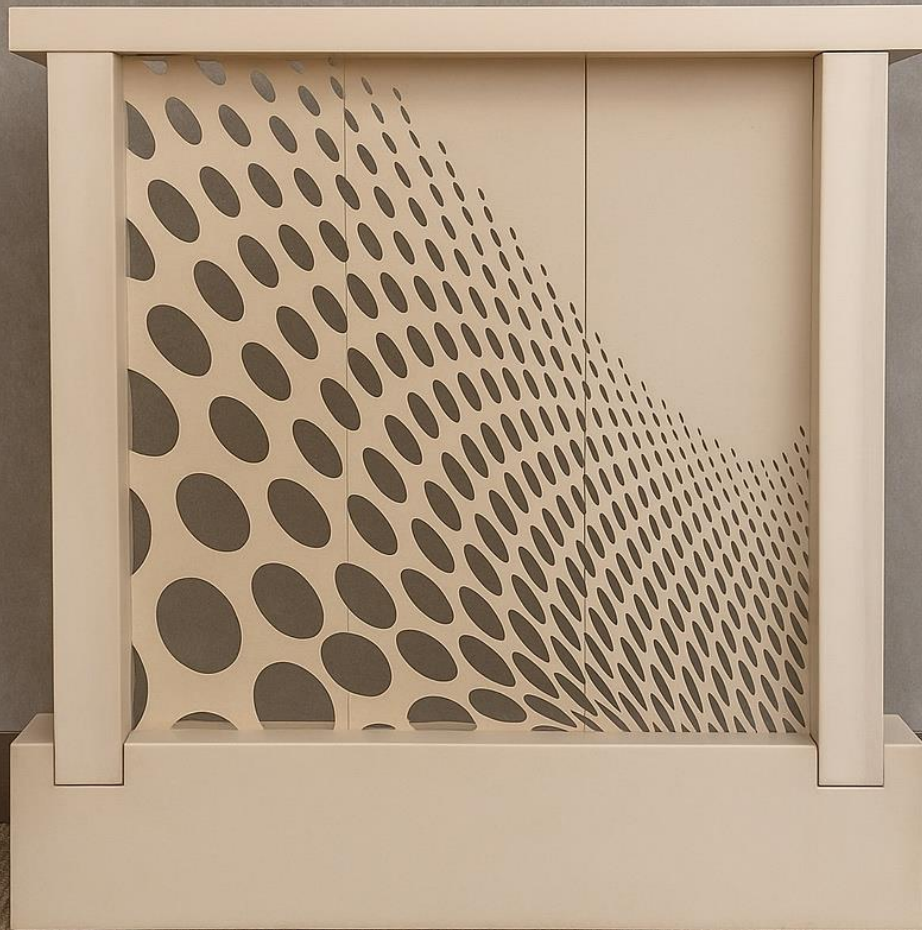
Intricate perforations create shifting patterned profiles, turning illumination into a live mural of light and shade

## Sensory Connection

Screen's tactile surface invites touch and engages senses, creating a connect with the environment

## Depth and Character

Textured design brings depth and character to flat walls, enriching the room's atmosphere



L1600/H530/T25 (mm)

W 48.5 (kg)



# Rhythm

*fashioned raised texture with artistic depth*

Relief is a modular screen made from 12 precision-cut segments with alternating linear patterns that create a symmetrical progression. Its interplay of recess and projection lends character to walls, pathways, and standalone installations.





## Relieving Pattern

Alternating linear motifs form a recurring geometry that feels harmonious yet captivating to the eye

## Modular Flexibility

Interlocking design allows flexible configurations to adapt effortlessly to different spaces and design visions

## Natural Ventilation

Openwork patterns allow breezes to flow through for natural cooling and fresh air circulation



L 480 / H 480 / T 25 (mm)

W 12.2 per piece (kg)



# Tide

*mild wave that befits its flowing pattern*

Flowing lines shape Tide, giving it a calm, kinetic presence. It invokes the imagery of smooth, continuous waves, enhancing its serene, ocean-inspired feel.





## Fluid Modelled Form

Inspired by the natural beat of waves, its flowing design adds a sense of movement to static architecture

## Dynamic Visual Depth

Organic curvature introduces a multi-layered effect, enhancing the perception of space

## Acoustic Diffusion

Irregular wave-like openings help soften and reflect sound gently in open environments



L1440 / H1240 / T25 (mm)

W102 (kg)



## Simple Steps for Everyday Elegance

Stone furniture requires minimal yet mindful care to maintain its beauty and strength.

### Cleaning

Wipe surfaces regularly with a soft, damp cloth and mild pH-neutral cleaners. Avoid abrasive pads, acidic solutions, or harsh chemicals, especially for polished or honed finishes.

### Protection

Use coasters, placemats, and trivets to prevent stains, heat marks, or etching from acidic foods and beverages.

## Preserving the Beauty of Stone, Year after Year

While stone is inherently durable, thoughtful maintenance ensures it remains pristine for decades.

### Preventive Measures

Use felt pads or rubber protectors under furniture legs to prevent scratches from occurring. Place rugs or mats in high-traffic areas to reduce wear.

### Stain Treatment

Address spills immediately by blotting (don't wipe) to avoid spreading. Use a poultice or recommended stain remover for persistent marks (test in a discreet area first).

### Weather and Seasonal Care

For outdoor stone furniture, consider using covers during periods of heavy rain or frost. Ensure proper drainage to prevent water pooling, which may lead to discolouration or erosion over time.



## Design Harmony with Nature's Finest Material

Stone furniture is more than just durable; it's sculptural, timeless, and versatile. Whether you're designing a contemporary living room or a serene outdoor space, styling stone pieces thoughtfully brings out their full beauty and impact.

### Balance with Soft Textures

Softer materials beautifully complement the stone's solidity. Pair your stone coffee table or bench with plush textiles, such as linen throws, velvet cushions, or wool rugs. This contrast creates visual warmth and tactile interest.

### Mix with Organic Elements

Embrace nature by combining stone with wood, rattan, ceramics, or indoor plants. This layered, earthy approach brings a grounded, calming feel to both indoor and outdoor settings.

### Highlight with Lighting

Stone surfaces come alive under the right light. Use warm, ambient lighting to accentuate the stone's texture and veining. Pendant lights above a stone dining table or spotlights on a console piece can add drama and depth.

### Let the Stone Speak

Stone has its voice, unique patterns, tones, and markings. Keep the surrounding décor minimal to let your stone piece be the focal point. A statement marble tabletop, for instance, needs little else to draw attention.

### Play with Contrast

For modern interiors, contrast the natural irregularity of stone with sleek, minimal furniture. In traditional or rustic spaces, stone blends effortlessly with aged wood, wrought iron, or brass details.

### Indoor-Outdoor Continuity

Utilise stone furniture as a visual bridge between indoor and outdoor living spaces. A stone bench in the hallway or a granite dining set on the patio can create a seamless flow throughout the home.

*Let your furniture reflect your lifestyle, not just your décor. Whether it's a tranquil corner or a bold statement, stone brings depth, texture, and timelessness. **Every stone has its own design story.***





# Colour Palettes

*your product . our possibilities.*

Our furniture is available in a range of colours and surface textures to adapt to your aesthetic. From soft neutrals and earthy tones to deep charcoals and warm greys, every piece is tailored not only to meet your functional needs but also to elevate your interiors with refined charm.

## QUARTZITIC SANDSTONE

Golden  
Glow



Honed



Satin



Leather



Sanded

Arctic  
Mist



Honed



Satin



Leather

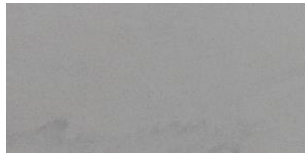


Sanded

Silver  
Path



Honed



Satin

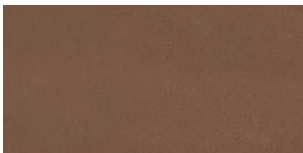


Leather



Sanded

Copper  
Ridge



Honed



Satin

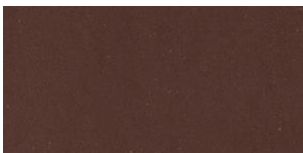


Leather



Sanded

Crimson  
Trail



Honed



Satin



Leather



Sanded

Midnight  
Crest



Honed



Satin



Leather



Sanded

Petal  
Bloom



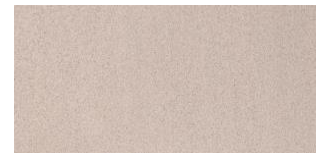
Honed



Satin



Leather



Sanded





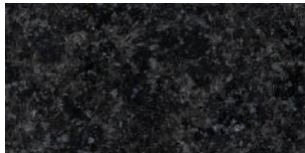
# Colour Palettes

*your product . our possibilities.*

Our furniture is available in a range of colours and surface textures to adapt to your aesthetic. From soft neutrals and earthy tones to deep charcoals and warm greys, every piece is tailored not only to meet your functional needs but also to elevate your interiors with refined charm.

## GRANITE

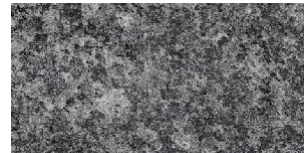
### Midnight Star



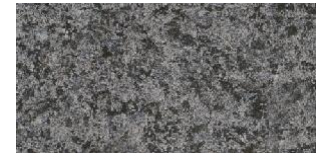
Honed



Oceana



Leather



Sanded

### Lunar Cove



Honed



Oceana

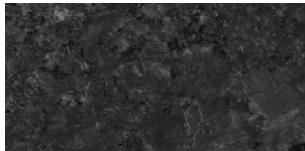


Leather



Sanded

### Silver Ash



Honed



Oceana



Leather



Sanded

## MARBLE

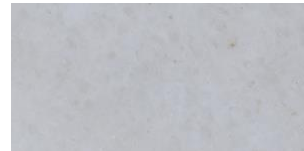
### Arctic Horizon



Honed



Satin



Polish

### Midnight Wave



Honed



Satin



Polish

### Forest Shaw



Honed



Satin



Polish

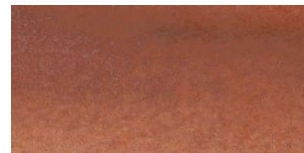
### Crimson Feather



Honed



Satin



Polish





## Surface Finishes

*your guide. our quality.*

Natural stone can be translated through various surface finishes, each offering a unique look, texture, and performance.

Whether you're seeking rustic charm, modern minimalism, or enhanced resistance, we offer customised finishes that suit your design and functional needs.

### Honed

Flat and smooth with little to no gloss, ideal for modern, minimalist applications

### Sanded

Smooth and subtly textured, this finish offers a refined matte look with gentle slip resistance

### Leather

A soft, textured finish with a subtle sheen that enhances the stone's natural grain and gives it a warm, inviting feel

### Oceana

A fine-textured surface achieved by high-pressure blasting, giving the stone a clean, grainy look with excellent slip resistance and a cool, contemporary feel

### Satin

Silky to the touch with a muted sheen, satin offers a balance between matte and polished

### Polished

Highly reflective and sleek, this finish enhances colour vibrancy and creates a premium feel









## Stone Shippers Limited

### Head Office

117 Jolly Maker Chambers II  
Nariman Point  
Mumbai 400 021  
India

### Experience Centre

32 Atlanta  
Nariman Point  
Mumbai 400 021  
India

+91 82917 88999  
[contactus@stoneshippers.com](mailto:contactus@stoneshippers.com)